

OFFICE SPACE FOR LEASE



23480 PARK SORRENTO
CALABASAS, CA 91302



COMMERCIAL
ASSET GROUP

SUITES AVAILABLE

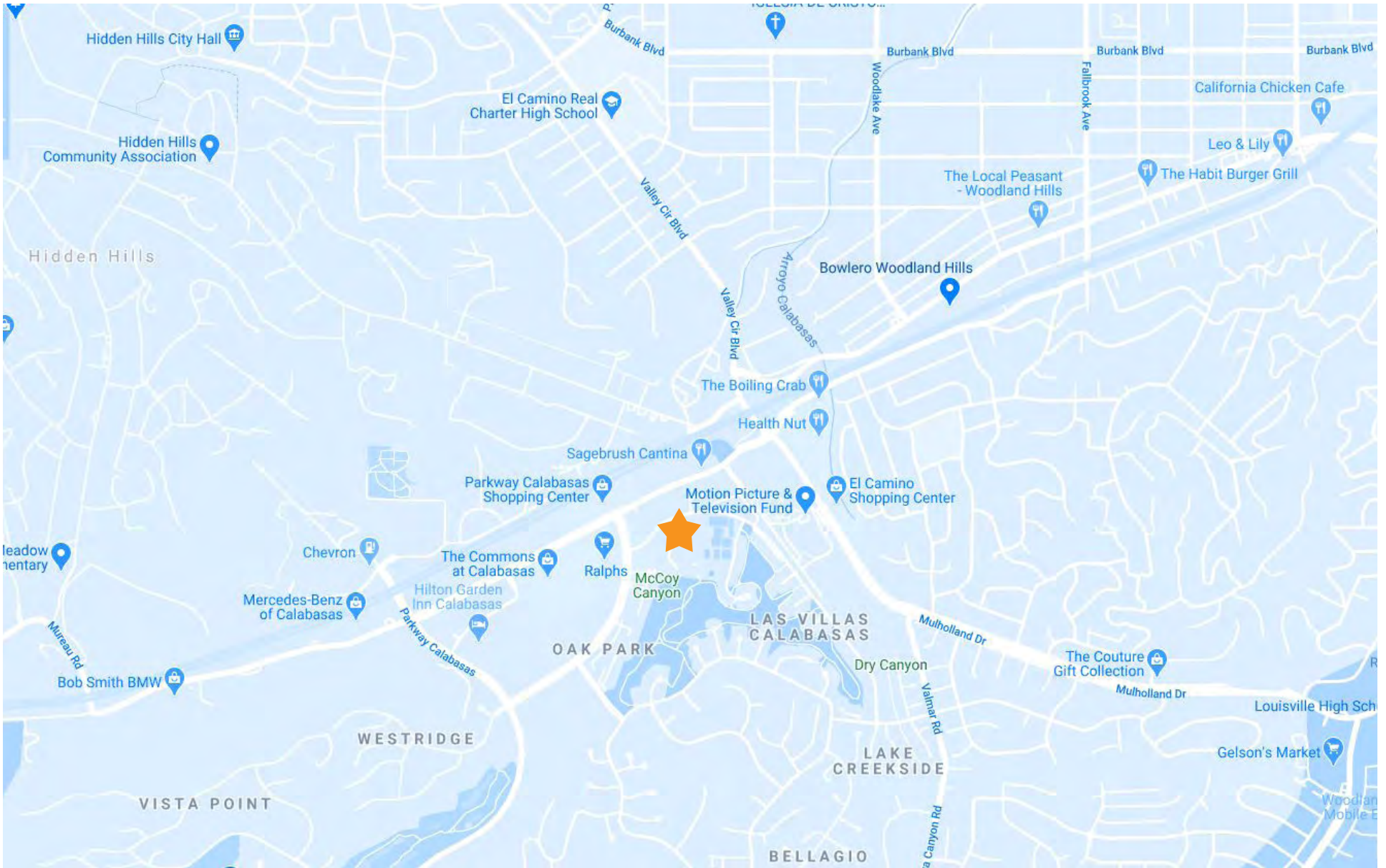
SUITE 201A: 644 RSF
SUITE 221A: 279 RSF
SUITE 115A: 439 RSF
SUITE 220B: 667 RSF
SUITE 102B: 643 RSF

LEASE RATE

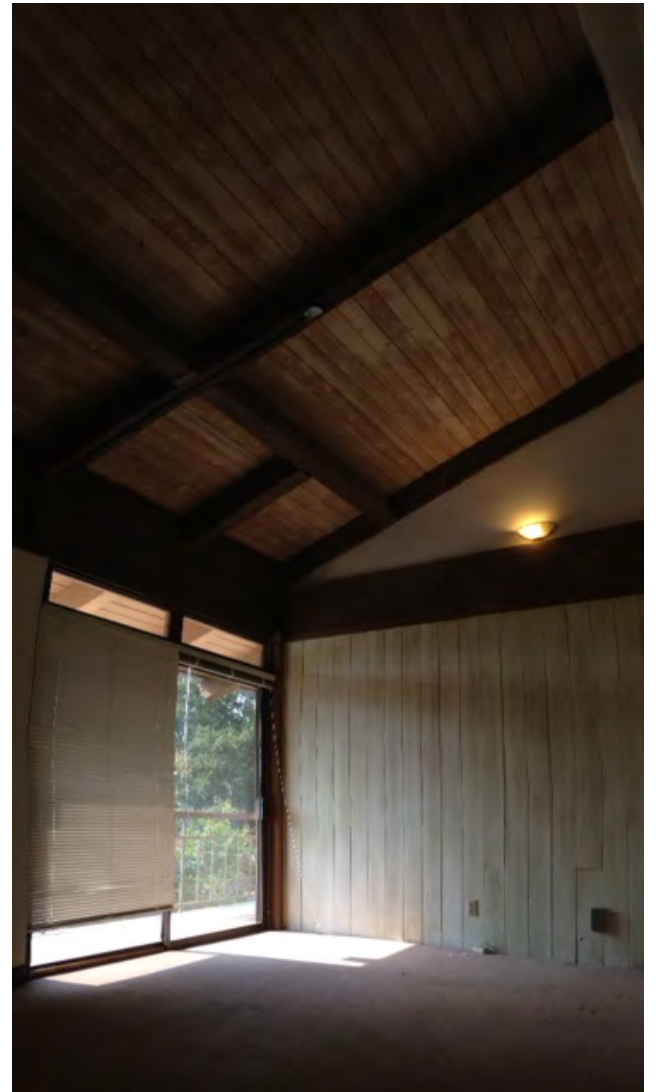
\$2.75 FSG

- **FANTASTIC LOCATION**
- **EASY ACCESS TO FREEWAYS AND PUBLIC TRANSPORTATION**
- **SLIDING GLASS DOORS, WOOD BEAMS AND HIGH CEILINGS IN MANY OFFICES**
- **CREATIVE OFFICE ENVIRONMENT, OPEN LANDSCAPED COMMON AREA**
- **WALKING DISTANCE TO AVANTI, THE COMMONS, SHOPS, RESTAURANTS, BANKS AND THE POST OFFICE**
- **AMPLE FREE SURFACE PARKING**
- **PREFER SHORT TERM LEASES - MAXIMUM TERM 1 YEAR**

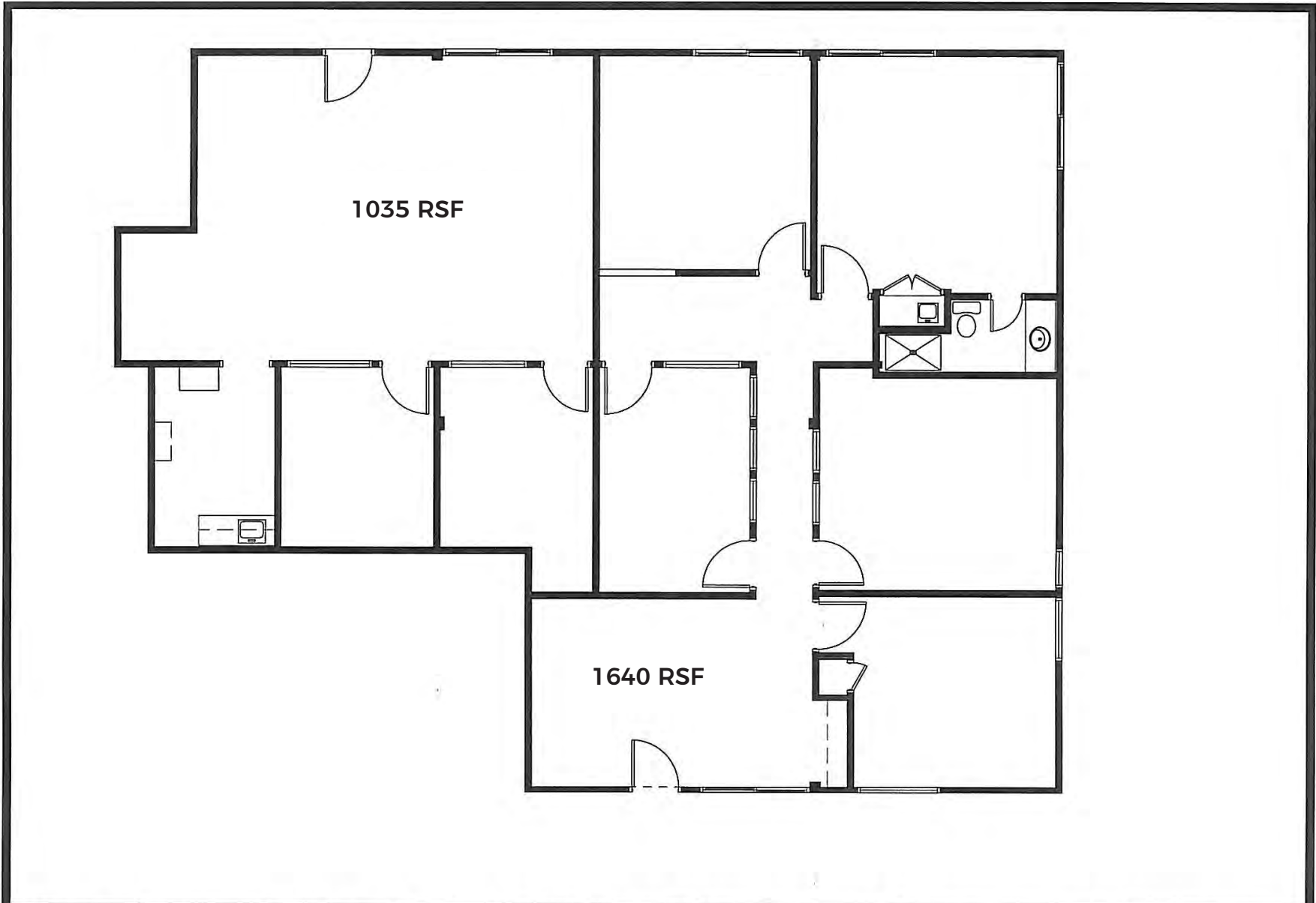
These materials are based on information and content provided by others, which we believe are accurate. No guarantee, warranty or representation is made by Commercial Asset Group, Inc. or its personnel. All interested parties must independently verify accuracy and completeness. As well, any projections, assumptions, opinion, or estimates are used for example only and do not represent the current or future performance of the identified property. Your tax, financial, legal and toxic substance advisors should conduct a careful investigation of the property and its suitability for your needs, including land use limitations. The property is subject to prior lease, sale, change in price, or withdrawal from the market without notice.



MAP



SPACE PHOTOS



| | | | | | | | |
|-----------------|-------------------|--------|--------|---|--|---|---|
| AREA CALC - 5 | Scale: 1/8"=1'-0" | Sheet: | Floor: | 23480 PARK SORRENTO SUITE 100B CALABASAS, CA | CONFIDENTIAL PROPERTY OF PACE DESIGN GROUP TO BE RETURNED ON REQUEST. NOT TO BE DISCLOSED TO OTHERS, REPRODUCED OR USED FOR ANY PURPOSES EXCEPT AS AUTHORIZED IN WRITING BY PACE DESIGN GROUP. | PACE DESIGN GROUP  | 7617 FAUST AVENUE WEST HILLS, CA 91304 P: 818.704.1888 F: 818.704.1847 Email: pacedesigngroup@bcalocal.net |
| Project #: 2069 | Drawn by: NC | AC5 | 1 | | | | |
| Date: 08-07-15 | Checked by: - | | | | | | |

FLOOR PLAN



COMMERCIAL
ASSET GROUP



BRUCE FRASCO

SENIOR MANAGING DIRECTOR

P 818.298.2900

E BFRASCO@CAG-RE.COM

LIC. 00639403

COMMERCIAL ASSET GROUP

1801 CENTURY PARK EAST, STE 1550

LOS ANGELES, CA 90067

P 310.275.8222 F 818.385.1470

WWW.CAG-RE.COM LIC. 01876070